

Agenda
Resort Tax Monitoring Committee
City Council Conference Room 2nd Floor City Hall (Remote Option)
Wednesday, February 15, 2023 7:05 a.m.

Call-in phone number 406-730-6124

1. Call to Order.
2. Public Comment.
3. Review and approve minutes for January 25, 2023.
4. Review the financial monthly report.
5. Resort Tax Re-allocation for Community Housing.
6. Update on Resort Tax Funded Street and Park Projects.
7. Set next meeting date for March 2023.

Members

Andy Feury
Ken Stein

Doug Reed
Chris Schustrom

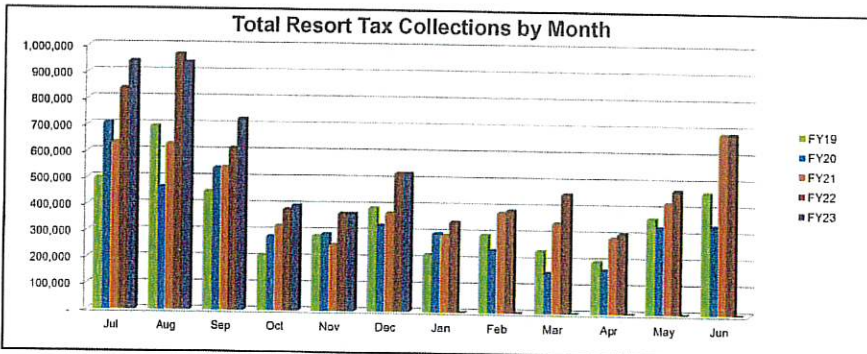
Brian Averill
Julia Olivares

Trek Stephens

- A. Property tax reduction for taxpayers residing in the city in an amount equal to twenty five percent (25%) of the three percent (3%) resort tax revenues derived during the preceding fiscal year.
- B. Provision for the repair and improvement of existing streets, storm sewers, all underground utilities, sidewalks, curbs and gutters, in an amount equal to sixty five percent (65%) of the two percent (2%) resort tax revenues derived during the preceding fiscal year.
- C. Bicycle paths and other park capital improvements in an amount equal to five percent (5%) of the two percent (2%) resort tax revenues derived during the preceding fiscal year.
- D. Repayment of a loan or a bond to finance a portion of the costs of, or to otherwise pay for, the acquisition of the conservation easement or other interests, in and around Haskill Basin in order to protect and preserve water quality and quantity, including the source drinking water supply for the municipal water system of the city of Whitefish, in an amount equal to seventy percent (70%) of the one percent (1%) resort tax revenues to be received in a fiscal year, except that if such portion of resort tax revenues received in a fiscal year is more than is needed in that fiscal year for such loan or bond, the excess will be applied to additional property tax relief in the next fiscal year;
- E. Cost of administering the resort tax in an amount equal to five percent (5%) of the three percent (3%) resort tax per year.

Resort Tax Report
Reported in the Month Businesses Collected Tax

MONTH/YEAR	LODGING	BARS & RESTAURANTS	RETAIL	COLLECTED		INTEREST	TOTAL
July 2018	119,942	177,844	198,144	495,929			
August 2018	264,354	229,620	197,726	691,700	3.63%	3,106	499,035
September 2018	142,291	164,124	140,948	447,364	2.93%	3,679	695,379
October 2018	20,456	97,842	88,200	206,499	22.03%	7.8%	3,651
November 2018	35,406	103,516	144,150	283,072	8.05%		4,961
December 2018	55,411	164,740	170,097	390,248	-4.31%		4,361
January 2019	18,604	104,553	93,126	216,282	23.87%	9.5%	2,934
February 2019	65,030	115,721	112,557	293,308	-5.90%		1,484
March 2019	39,314	99,013	96,841	235,168	3.05%		2,964
April 2019	10,603	95,642	90,323	196,568	-1.17%	-1.0%	3,516
May 2019	66,270	129,909	166,386	362,565	-2.56%		3,636
June 2019	127,881	172,006	159,794	459,681	13.36%		3,845
Total FY19	\$ 965,561	\$ 1,654,530	\$ 1,658,293	\$ 4,278,383	2.58%	5.1%	3,792
FY18 vs FY19	10.33%	5.57%	3.70%	5.66%	or \$	236,654	5.86%
July 2019	232,446	249,822	222,176	704,445	42.05%		4,227
August 2019	107,095	171,849	184,288	464,123	-32.90%		4,340
September 2019	202,784	187,080	146,596	536,460	19.92%	4.3%	4,210
October 2019	72,020	114,362	93,111	279,493	35.35%		3,500
November 2019	31,925	104,797	154,109	290,831	2.74%		2,351
December 2019	26,204	122,189	176,468	324,861	-16.76%	1.7%	2,181
January 2020	47,244	113,913	135,507	296,664	37.17%		1,225
February 2020	28,523	88,008	119,748	236,279	-19.44%		3,502
March 2020	9,979	58,382	86,606	152,967	-34.85%	-7.9%	2,172
April 2020	6,957	71,096	87,353	165,406	-15.85%		1,799
May 2020	50,570	105,786	173,207	329,563	-9.16%		1,470
June 2020	42,139	110,343	182,042	334,524	-27.23%	-18.6%	3,736
Total FY20	\$ 858,777	\$ 1,495,628	\$ 1,761,211	\$ 4,115,615	-3.80%	\$ 34,713	\$ 4,150,328
FY19 vs FY20	-11.06%	-10.86%	6.21%	-3.80%	or \$	(162,768)	24.64%
July 2020	178,173	214,868	236,685	629,826	-10.59%		682
August 2020	234,063	196,817	194,056	624,936	34.65%		1,066
September 2020	158,102	191,941	188,641	538,684	0.41%	5.2%	898
October 2020	88,284	112,076	119,814	320,174	14.95%		1,058
November 2020	78,378	69,415	101,398	249,190	-14.32%		561
December 2020	32,442	111,811	226,456	370,710	14.11%	5.8%	407
January 2021	46,820	111,925	132,183	290,728	-2.90%		365
February 2021	85,582	148,765	143,459	377,805	59.90%		348
March 2021	57,027	140,256	143,766	341,049	122.90%	47.2%	348
April 2021	35,142	132,266	119,185	286,593	73.27%		414
May 2021	77,012	151,978	191,091	420,081	27.47%		441
June 2021	210,216	216,079	253,610	679,905	103.25%	67.2%	467
Total FY21	\$ 1,281,040	\$ 1,798,296	\$ 2,050,344	\$ 5,129,681	103.25%	\$ 2,210	\$ 5,138,597
FY20 vs FY21	50.34%	20.24%	16.42%	24.64%	or \$	1,014,065	24.64%
FY21 % of Collections	25%	35%	40%	100%			
July 2021	227,005	283,424	324,582	835,011	32.88%	504	835,515
August 2021	414,859	298,012	254,869	965,740	54.53%	535	966,275
September 2021	215,882	190,513	205,771	612,166	13.64%	641	612,807
October 2021	90,251	156,461	136,035	382,747	19.54%	705	383,452
November 2021	36,679	124,428	207,615	368,721	47.87%	702	369,423
December 2021	78,801	176,472	266,384	521,657	40.72%	35.4%	561
January 2022	60,241	142,427	137,885	340,553	17.14%	423	340,976
February 2022	79,068	131,154	177,008	387,230	2.49%	432	387,662
March 2022	73,108	192,830	185,509	451,447	32.37%	16.8%	569
April 2022	42,243	130,622	130,656	303,521	9.91%		711
May 2022	84,935	148,911	234,101	467,947	11.39%		1,013
June 2022	205,559	231,565	245,873	682,997	0.45%	4.9%	3,704
Total FY22	\$ 1,608,630	\$ 2,204,819	\$ 2,506,288	\$ 6,319,737	23.20%	\$ 10,500	\$ 6,330,237
FY21 vs FY22	25.57%	22.61%	22.24%	23.20%	or \$	1,190,056	23.20%
FY22 % of Collections	25%	35%	40%	100%			
July 2022	299,416	314,037	326,589	940,042	12.58%		940,042
August 2022	360,858	286,395	288,990	936,243	-3.05%		936,243
September 2022	220,178	257,560	244,535	722,273	17.99%	7.7%	722,273
October 2022	87,683	148,074	161,191	396,948	3.71%		366,948
November 2022	35,220	114,207	219,625	369,052	0.69%		369,052
December 2022	66,545	176,792	279,272	522,609	0.18%	1.2%	522,609
January 2023	-	-	-	-	-100.00%		-
February 2023	-	-	-	-	-100.00%		-
March 2023	-	-	-	-	-100.00%		-
April 2023	-	-	-	-	-100.00%	-100.0%	-
May 2023	-	-	-	-	-100.00%		-
June 2023	-	-	-	-	-100.00%		-
Total FY23	\$ 1,069,900	\$ 1,297,065	\$ 1,520,202	\$ 3,887,167	-100.00%	\$ -	\$ 3,887,167
FY22 vs FY23	0.60%	5.68%	8.96%	5.46%	or \$	201,125	3.18%
FY23 % of Collections	28%	33%	30%	100%			
Grand Total	\$ 12,815,488	\$ 22,808,232	\$ 26,135,610	\$ 61,759,329		\$ 896,848	\$ 62,656,727
% of Total Collections	21%	37%	42%	100%			

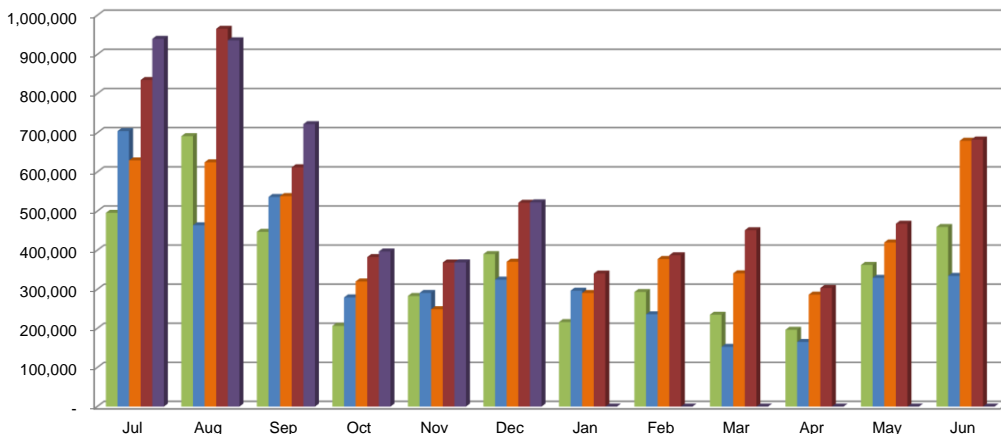


Total Taxable Sales Since 1990	
FY06-FY15	\$ 1,415,763,781
FY16-YTD	\$ 1,223,151,493
Total	\$ 2,638,915,274
Total Collected	
FY06-FY15	\$ 28,315,276
FY16-YTD	\$ 30,694,545
Total	\$ 59,009,820
5% Admin	
FY06-FY15	\$ 1,415,784
FY16-YTD	\$ 1,834,727
Total	\$ 3,250,491
Public Portion	
FY06-YTD	\$ 81,759,329

Resort Tax Report
Reported in the Month Businesses Collected Tax
AS OF NOVEMBER 30, 2008

<u>MONTH/YEAR</u>	<u>LODGING</u>	<u>BARS & RESTAURANTS</u>	<u>RETAIL</u>	<u>COLLECTED</u>		<u>INTEREST</u>	<u>TOTAL</u>
July 2020	178,173	214,968	236,685	629,826	-10.59%	682	630,508
August 2020	234,063	196,817	194,056	624,936	34.65%	1,066	626,002
September 2020	158,102	191,941	188,641	538,684	0.41%	898	539,582
October 2020	88,284	112,076	119,814	320,174	14.56%	1,058	321,232
November 2020	78,378	69,415	101,398	249,190	-14.32%	561	249,751
December 2020	32,442	111,811	226,456	370,710	14.11%	407	371,117
January 2021	46,620	111,925	132,183	290,728	-2.00%	365	291,093
February 2021	85,582	148,765	143,459	377,805	59.90%	348	378,153
March 2021	57,027	140,256	143,766	341,049	122.96%	414	341,463
April 2021	35,142	132,266	119,185	286,593	73.27%	441	287,034
May 2021	77,012	151,978	191,091	420,081	27.47%	467	420,548
June 2021	210,216	216,079	253,610	679,905	103.25%	2,210	682,115
Total FY21	\$ 1,281,040	\$ 1,798,296	\$ 2,050,344	\$ 5,129,681	24.64%	\$ 8,917	\$ 5,138,597
FY20 vs FY21	50.34%	20.24%	16.42%	24.64%	or \$	1,014,065	Taxable Sales FY21 \$ 179,988,799
FY21 % of Collections	25%	35%	40%	100%			
July 2021	227,005	283,424	324,582	835,011	32.58%	504	835,515
August 2021	414,859	296,012	254,869	965,740	54.53%	535	966,275
September 2021	215,882	190,513	205,771	612,166	13.64%	641	612,807
October 2021	90,251	156,461	136,035	382,747	19.54%	705	383,452
November 2021	36,679	124,428	207,615	368,721	47.97%	702	369,423
December 2021	78,801	176,472	266,384	521,657	40.72%	561	522,218
January 2022	60,241	142,427	137,885	340,553	17.14%	423	340,976
February 2022	79,068	131,154	177,008	387,230	2.49%	432	387,662
March 2022	73,108	192,830	185,509	451,447	32.37%	569	452,016
April 2022	42,243	130,622	130,656	303,521	5.91%	711	304,232
May 2022	84,935	148,911	234,101	467,947	11.39%	1,013	468,960
June 2022	205,559	231,565	245,873	682,997	0.45%	3,704	686,701
Total FY22	\$ 1,608,630	\$ 2,204,819	\$ 2,506,288	\$ 6,319,737	23.20%	\$ 10,500	\$ 6,330,237
FY21 vs FY22	25.57%	22.61%	22.24%	23.20%	or \$	1,190,056	Taxable Sales FY22 \$ 221,745,162
FY22 % of Collections	25%	35%	40%	100%			
July 2022	299,416	314,037	326,589	940,042	12.58%	\$	940,042
August 2022	360,858	286,395	288,990	936,243	-3.05%	\$	936,243
September 2022	220,178	257,560	244,535	722,273	17.99%	\$	722,273
October 2022	87,683	148,074	161,191	396,948	3.71%	\$	396,948
November 2022	35,220	114,207	219,625	369,052	0.09%	\$	369,052
December 2022	66,545	176,792	279,272	522,609	0.18%	\$	522,609
January 2023	64,500	169,337	157,996	391,833	15.06%	\$	391,833
February 2023	-	-	-	-	-100.00%	\$	-
March 2023	-	-	-	-	-100.00%	\$	-
April 2023	-	-	-	-	-100.00%	\$	-
May 2023	-	-	-	-	-100.00%	\$	-
June 2023	-	-	-	-	-100.00%	\$	-
Total FY23	\$ 1,134,400	\$ 1,466,402	\$ 1,678,198	\$ 4,279,000	6.27%	\$ -	\$ 4,279,000
FY22 vs FY23	0.95%	7.06%	9.46%	6.27%	or \$	252,405	Taxable Sales FY23 \$ 150,140,360
Grand Total	\$ 12,879,988	\$ 22,977,569	\$ 26,293,606	\$ 62,151,162		\$ 896,848	\$ 63,048,560
% of Total Collections	21%	37%	42%				

Total Resort Tax Collections by Month



Total Taxable Sales Since 1996	
FY96-FY15	\$ 1,415,763,781
FY16-YTD	\$ 1,236,900,019
Total	\$ 2,652,663,800
Total Collected	
FY96-FY15	\$ 28,315,276
FY16-YTD	\$ 37,107,001
Total	\$ 65,422,276
5% Admin	
FY96-FY15	\$ 1,415,764
FY16-YTD	\$ 1,855,350
Total	\$ 3,271,114
Public Portion	
FY96-YTD	\$ 62,151,162